



High Performance FLUOROPOLYMER'S



Chemical



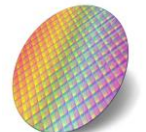
Electrical



Aero Space



Pharmaceutical



Semi - Conductor



Telecommunication

PRODUCT LINE

Fluoropolymer Tubing

- Extruded Teflon PTFE , FEP , PFA , UHP PFA & ETFE
- Convoluted PTFE , FEP & ETFE
- Corrugated FEP & PFA
- Spiral wrap
- PTFE Rod & Beading
- Retractable & Coiled Tubing

Special Applications

- FEP Coated Copper
- Teflon Encapsulation
- Etching
- Flaring
- Slitting & Cuffing
- Thermosetting
- Product Assembly
- Custom Cutting

Heat Shrinkable Fluoropolymer Tubing

- PTFE Tubing 2:1 & 4:1
- FEP Tubing 1.3:1 & 1.6:1
- FEP Roll Covers 1.25:1
- Dual Wall PTFE / FEP

Heat Shrinkable Teflon Probe Covers

- Teflon FEP Probe Cover
- Teflon PFA Probe Cover

Heat Shrinkable Polyolefin

- Single Wall 2:1 , 3:1 , 4:1
- Adhesive Lined 2:1 , 3:1
- Heavy Wall Lined



Extruded PTFE Tubing & Sleeving

PTFE Fluoropolymer Tubing is regarded as the ultimate standard in heat and chemical resistance. With an upper service temperature of 500 F and chemically resistant to almost all chemicals and solvents the physical properties of PTFE are unmatched by any other material. PTFE Tubing is called to meet a wide range of military and commercial requirements.

AWG Size	Min ID	Nominal ID	Max ID	Standard Wall	Thin Wall	Light Wall
32	.008	.010	.012	.005 +/- .002	.005 +/- .002	***
30	.010	.012	.015	.009 +/- .002	.009 +/- .002	.006 +/- .002
28	.013	.015	.018	.009 +/- .002	.009 +/- .002	.006 +/- .002
26	.016	.018	.021	.009 +/- .002	.009 +/- .002	.006 +/- .002
24	.020	.022	.026	.012 +/- .002	.010 +/- .003	.006 +/- .002
23	.023	.026	.029	.012 +/- .002	.010 +/- .003	.006 +/- .002
22	.025	.028	.032	.012 +/- .002	.010 +/- .003	.006 +/- .002
21	.029	.032	.035	.012 +/- .002	.010 +/- .003	.006 +/- .002
20	.032	.034	.038	.016 +/- .003	.012 +/- .003	.006 +/- .002
19	.036	.038	.042	.016 +/- .003	.012 +/- .003	.006 +/- .002
18	.040	.042	.046	.016 +/- .003	.012 +/- .003	.006 +/- .002
17	.045	.047	.052	.016 +/- .003	.012 +/- .003	.006 +/- .002
16	.051	.053	.058	.016 +/- .003	.012 +/- .003	.006 +/- .002
15	.057	.059	.065	.016 +/- .003	.012 +/- .003	.006 +/- .002
14	.064	.066	.072	.016 +/- .003	.012 +/- .003	.008 +/- .002
13	.072	.076	.081	.016 +/- .003	.012 +/- .003	.008 +/- .002
12	.081	.085	.091	.016 +/- .003	.012 +/- .003	.008 +/- .002
11	.091	.095	.101	.016 +/- .003	.012 +/- .003	.008 +/- .002
10	.102	.106	.112	.016 +/- .003	.015 +/- .003	.008 +/- .002
9	.114	.118	.124	.020 +/- .004	.015 +/- .003	.008 +/- .002
8	.129	.133	.139	.020 +/- .004	.015 +/- .003	.008 +/- .002
7	.144	.148	.155	.020 +/- .004	.015 +/- .003	.008 +/- .002
6	.162	.166	.174	.020 +/- .004	.015 +/- .003	.010 +/- .003
5	.182	.186	.195	.020 +/- .004	.015 +/- .003	.010 +/- .003
4	.204	.208	.218	.020 +/- .004	.015 +/- .003	.010 +/- .003
3	.229	.234	.244	.020 +/- .004	.015 +/- .003	.010 +/- .003
2	.258	.263	.273	.020 +/- .004	.015 +/- .003	.010 +/- .003
1	.289	.294	.305	.020 +/- .004	.015 +/- .003	.010 +/- .003
0	.325	.330	.342	.020 +/- .004	.015 +/- .003	.012 +/- .003

Material : 100 % virgin PTFE Resins

Standard Color : Natural

Available in : Black , Brown, Red, Orange, Yellow, Green , Blue, Violet, Gray, White

Services : Etching is available for applications requiring bonding. Precision and tight tolerance cutting.

Specifications :

- ❖ ASTM D3295 CLASSES A,B,C,D,E
- ❖ MIL - I - 22129
- ❖ AMS 3653 , 3654 , 3655

PTFE Tubing complies with UL-224 and is VW-1 rated



PTFE - FEP - PFA

Smooth Bore Tubing

Fluoropolymer PTFE and FEP tubing from Tef Cap is designed to industry specifications such as MIL, UL, AMS & ASTM. For chemical resistance, high temperature applications and high dielectric strength Fluoropolymer Tubing meets your challenge.

Extruded Fractional Tubing

Fractional Size	Min ID	Nominal ID	Max ID	Standard Wall	Thin Wall	Light Wall
1/8	.120	.125	.130	.020 +/- .004	.015 +/- .003	***
3/16	.188	.192	.198	.020 +/- .004	.015 +/- .003	.010 +/- .003
1/4	.250	.255	.260	.020 +/- .004	.015 +/- .003	.010 +/- .003
5/16	.313	.321	.332	.020 +/- .004	.015 +/- .003	.012 +/- .003
3/8	.375	.387	.394	.025 +/- .005	.015 +/- .003	.015 +/- .003
7/16	.438	.451	.458	.025 +/- .005	.018 +/- .004	.018 +/- .004
1/2	.500	.515	.520	.025 +/- .005	.018 +/- .004	.018 +/- .004
5/8	.625	.643	.650	.025 +/- .005	.020 +/- .004	.020 +/- .004
3/4	.750	.772	.775	.030 +/- .006	.025 +/- .005	.020 +/- .005
7/8	.875	.902	.927	.035 +/- .007	***	***
1	1.000	1.030	1.060	.035 +/- .007	***	***
1 1/4	1.250	1.287	1.325	.040 +/- .007	***	***
1 1/2	1.500	1.550	1.580	.045 +/- .007	***	***

Heavy Construction Tubing

Size	I. D.	O. D.	Nominal Wall	Fraction
1/4	.125 +/- .005	.250 +/- .005	.063	1/8 x 1/4
5/16	.188 +/- .005	.313 +/- .005	.063	3/16 x 5/16
3/8	.250 +/- .005	.375 +/- .005	.063	1/4 x 3/8
7/16	.313 +/- .005	.438 +/- .005	.063	5/16 x 7/16
1/2	.375 +/- .005	.500 +/- .006	.063	3/8 x 1/2
9/16	.438 +/- .006	.563 +/- .006	.063	7/16 x 9/16
5/8	.500 +/- .006	.625 +/- .006	.063	1/2 x 5/8
11/16	.563 +/- .006	.688 +/- .006	.063	9/16 x 11/16
3/4	.625 +/- .006	.750 +/- .006	.063	5/8 x 3/4
13/16	.688 +/- .006	.813 +/- .006	.063	11/16 x 13/16
7/8	.750 +/- .006	.875 +/- .006	.063	3/4 x 7/8
15/16	.813 +/- .006	.938 +/- .006	.063	13/16 x 15/16
1	.875 +/- .010	1.00 +/- .010	.063	7/8 x 1

Industrial Wall Tubing

Size	I. D.	O. D.	Nominal Wall	Fraction
1/32	.031 +/- .004	.063 +/- .005	.015	1/32 x 1/16
1/16	.063 +/- .005	.125 +/- .005	.030	1/16 x 1/8
3/32	.094 +/- .005	.156 +/- .005	.030	3/32 x 5/32
1/8	.125 +/- .005	.188 +/- .005	.030	1/8 x 3/16
3/16	.188 +/- .005	.250 +/- .005	.030	3/16 x 1/4
1/4	.250 +/- .005	.313 +/- .005	.030	1/4 x 5/16
5/16	.313 +/- .005	.375 +/- .005	.030	5/16 x 3/8
3/8	.375 +/- .005	.438 +/- .005	.030	3/8 x 7/16
7/16	.438 +/- .005	.500 +/- .006	.030	7/16 x 1/2
1/2	.500 +/- .006	.563 +/- .006	.030	1/2 x 9/16
9/16	.563 +/- .006	.625 +/- .006	.030	9/16 x 5/8
5/8	.625 +/- .006	.688 +/- .006	.030	5/8 x 11/16
11/16	.688 +/- .006	.750 +/- .006	.032	11/16 x 3/4
3/4	.750 +/- .006	.830 +/- .006	.040	***
7/8	.875 +/- .006	.965 +/- .006	.045	***
1	1.000 +/- .010	1.100 +/- .010	.050	***
1 1/8	1.125 +/- .015	1.215 +/- .015	.045	***
1 1/4	1.250 +/- .015	1.340 +/- .015	.040	***
1 1/2	1.500 +/- .015	1.580 +/- .015	.040	***

Metric PTFE Tubing

I. D.	O. D.	Nominal Wall	Decimal
2 MM	4 MM	1 MM	.079 x .157
4 MM	6 MM	1 MM	.157 x .236
6 MM	8 MM	1 MM	.236 x .315
8 MM	10 MM	1 MM	.315 x .394
10 MM	12 MM	1 MM	.394 x .472

Metric FEP Tubing

I. D.	O. D.	Nominal Wall	Decimal
2 MM	4 MM	1 MM	.078 x .157
3 MM	5 MM	1 MM	.118 x .197
4 MM	6 MM	1 MM	.157 x .236
5 MM	7 MM	1 MM	.197 x .276
6 MM	8 MM	1 MM	.236 x .315
7 MM	9 MM	1 MM	.276 x .354
8 MM	10 MM	1 MM	.315 x .394
9 MM	11 MM	1 MM	.354 x .433
10 MM	12 MM	1 MM	.394 x .472
11 MM	13 MM	1 MM	.433 x .512
12 MM	14 MM	1 MM	.472 x .551
14 MM	16 MM	1 MM	.551 x .630