

airtècnics



airtècnics

Air Curtains Fans Ventilation Actuators

Air Curtain | Kool



Characteristics

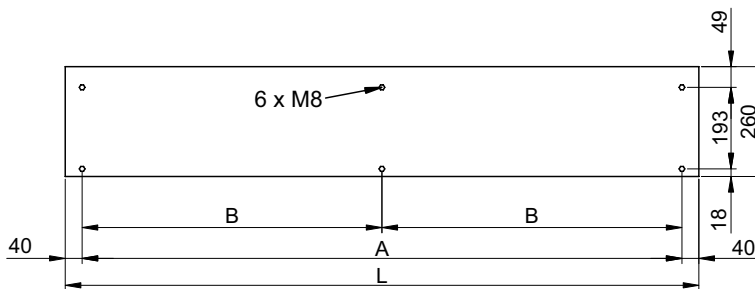
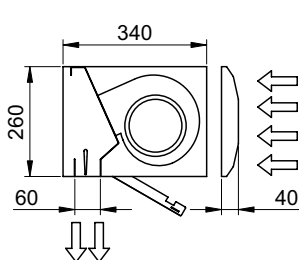


- Specially designed to be installed on doors of cold stores and freezers.
- Self-supporting casing construction made of galvanized plated steel, finished in structural epoxy-polyester RAL 9016 as standard. Other colours or stainless steel construction are available on request.
- Low noise centrifugal double inlet fans driven by an external rotor motor with built in thermal protection contact. Provided with five speed selection.
- Perforated inlet grille with large absorbing surface to minimize the air pressure drop. It doesn't need filter.
- Also available with flat micro-perforated inlet grille, more elegant, for commercial doors where heating is not needed.
- Anodised aluminium blow-out vanes, airfoil shaped, adjustable from 0 to 15° each side.
- Control panel and 20m of telephonic cable with fast connectors type RJ45 (Plug & Play), included. Optional: Interface to connect to BMS.

Specifications

Model	Airflow m ³ /h	Without heating Air only	Fans power Input 230V-50Hz kW	Fans Current 230V-50Hz A	Noise level (3 m) dB(A)	Weight kg
KS 1000 A	1300		0,372	1,68	53	29
KS 1500 A	1950		0,558	2,52	54	44
KS 2000 A	2600		0,744	3,36	55	53
KS 2500 A	3250		0,930	4,20	56	55
KS 3000 A	3900		1,116	5,04	57	58
<hr/>						
KM 1000 A	1850		0,510	2,22	54	29
KM 1500 A	2775		0,765	3,33	55	44
KM 2000 A	3700		1,020	4,44	56	53
KM 2500 A	4625		1,275	5,55	57	55
KM 3000 A	5550		1,530	6,66	58	58
<hr/>						
KG 1000 A	2775		0,765	3,33	55	33
KG 1500 A	3700		1,020	4,44	56	49
KG 2000 A	5550		1,530	6,66	57	63
KG 2500 A	6475		1,785	7,77	58	65
KG 3000 A	7400		2,040	8,88	59	68

Dimensions



L	A	B
1000	920	-
1500	1420	710
2000	1920	960
2500	2420	1210
3000	2920	1460

